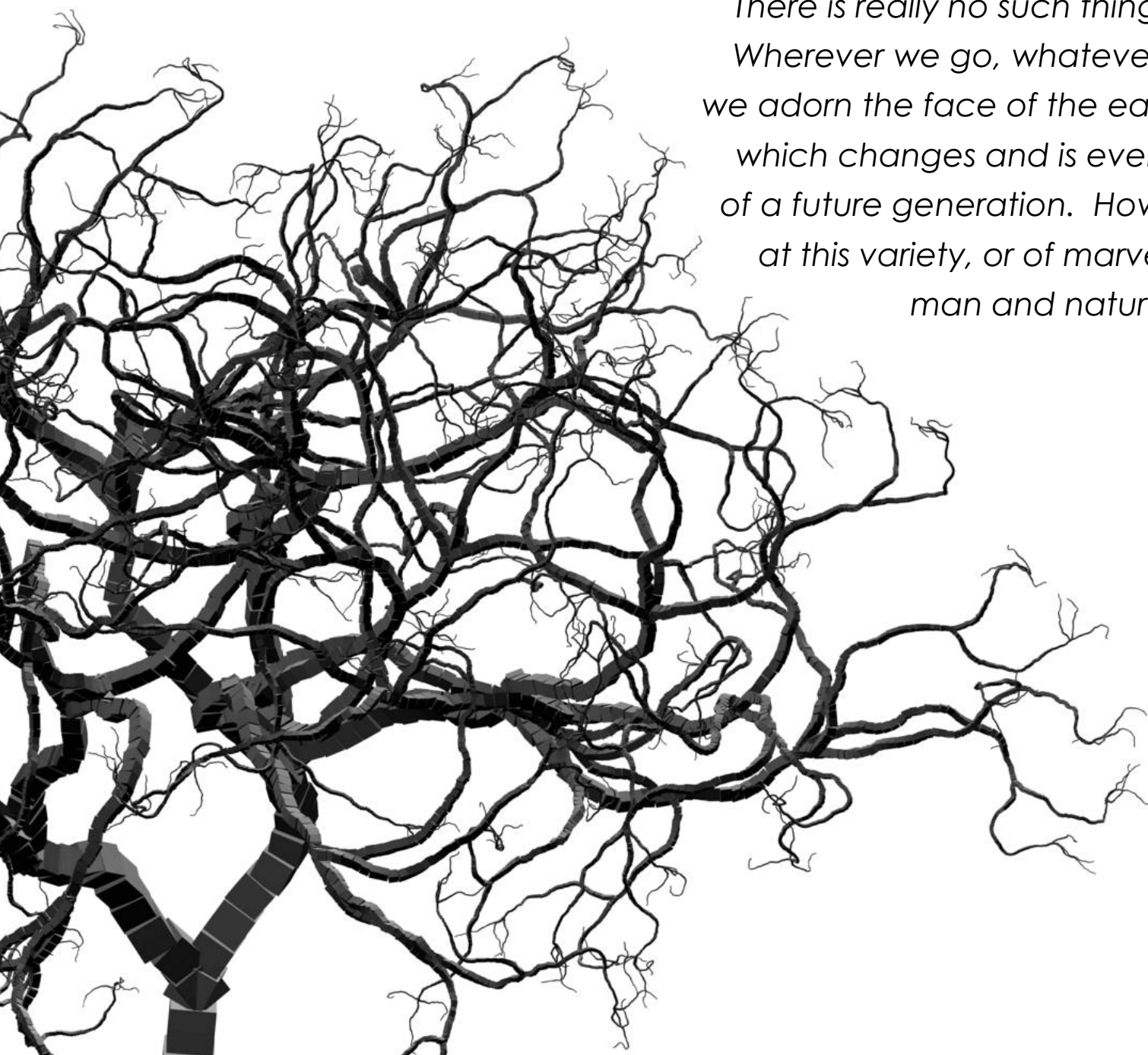


Tree:
Cyrille Henry



JT newton
STUDIO

**Landscape
+ Design**



*There is really no such thing as a dull landscape ...
Wherever we go, whatever the nature of our work,
we adorn the face of the earth with the living design
which changes and is eventually replaced by that
of a future generation. How can one tire of looking
at this variety, or of marveling at the forces within
man and nature that brought it about?*

- J. B. Jackson

Table of Contents

Custom Home

Oyster Harbour
The Moorings
Seapine Cottage
Oak Cliff Manor
House on the Cove

Multi-Unit
Development

Vineyard Reach
Seaside
Four Corners
Wakefield Crossing

Commercial/
Institutional

Children's Center
Worcester State College

Land Planning

Winchester Farm
Florham Park
Denville Station

Custom Home

Oyster Harbour

Osterville, MA

To create a well designed residential landscape, one must understand how the land works with the architectural framework of the property to accommodate the various activities of daily life. The home's yard space has two somewhat contradictory functions. It serves as both the homeowner's connection to, and separation from, the surrounding community. Seamlessly blending this dichotomy with the homeowner's aesthetic preferences can transform a generic property into a home that is both beautiful and personal, while providing a variety of usable space.





Custom Home

The Moorings

Chatham, MA

If you have a garden and a library, you have everything you need.

- Marcus Tullius Cicerero



Conceptual Plan



Before



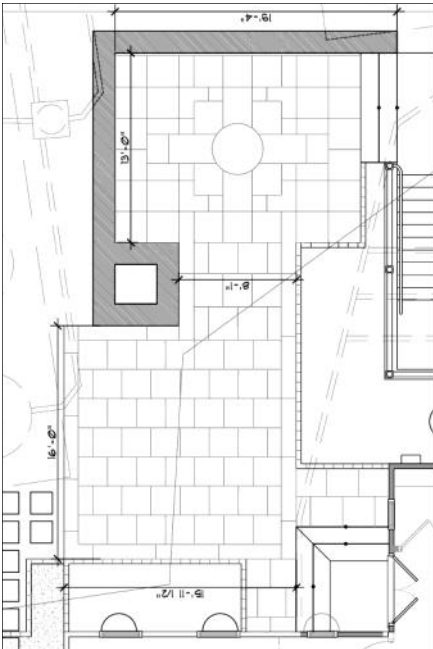
After



After



Before



CAD inputting by others



Custom Home

Seapine Cottage

Chatham, MA

It has become much harder, in the past century, to tell where the garden leaves off and pure nature begins.

- Michael Pollan





Custom Home

Oak Cliff Manor

Wellesley, MA

Gardens are a form of autobiography.

- Sydney Eddison





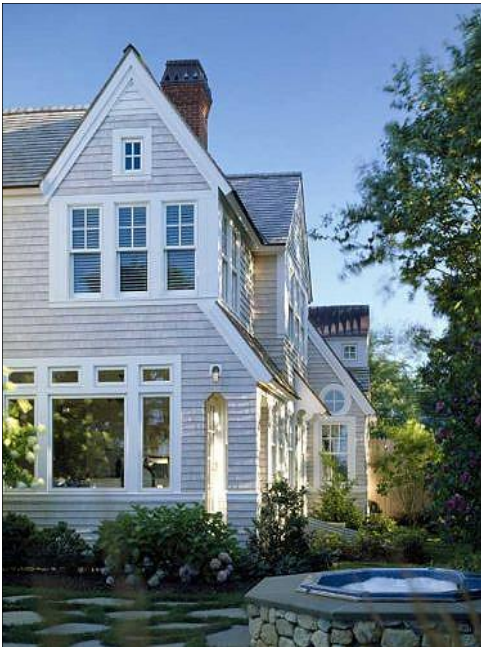
Custom Home

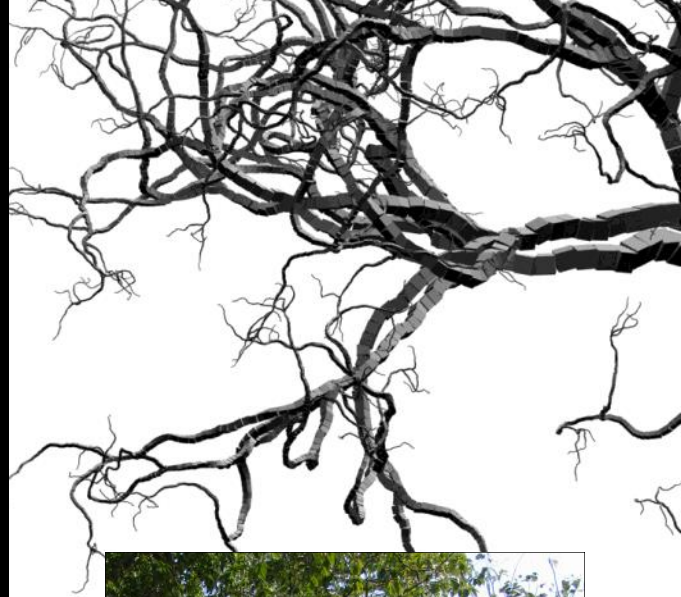
House on the Cove

Chatham, MA

*There is always music
amongst the trees in the
garden but, our hearts must
be very quiet to hear it.*

- Minnie Aumonier





Multi-Unit Development

Vineyard Reach

Mashpee, MA



High-density residential housing is unique in that the exterior spaces must function for residents as both their home and community environments. These spaces not only need to provide for individual comfort and usability but also satisfy basic human requirements of family, friends and neighborhoods.

Multi-Unit Development

Seaside

Mashpee, MA





Multi-Unit Development

Four Corners

East Fishkill, NY

The Nationals
2006 Silver Award
Best Landscape Design
For a Detached
Project



Multi-Unit Development

Wakefield Crossing

Wakefield, MA



Commercial/ Institutional

Children's Center

Wequassett Golf and Resort
Chatham, MA

Play areas are sanctuaries for thought and play. They should be a place of quiet contemplation and a child's imagination. By creating a safe haven for children and families alike, outdoor spaces can be designed for people to gather, play and enjoy.



Splash Pad

- Showers & Sprays
- Non-Slip Surface

6' High Pool Fence

Evergreen Screen

Pirate Ship

Boiler Seats

Tree House

Swing Bridge

Childrens Play Area

- Multi-use climbing structure
- Soft surface

Outdoor Theater

- Stone Steps & Stadium Seats
- Lawn Aisles

Seating Area

- Lunch, snacks
- Arts & crafts
- Table Games
- Nautilus Paving Pattern

Gate

Retaining Wall

Bench

Sand Box

Childrens Center

Projection Screen

Stage

Projector

Retaining Wall

Entry

Hot Lot



Commercial/ Institutional

Dowden Hall

Worcester State College
Worcester, MA





Courtyard concepts for dorm area.
 Concept A emphasizes plantings
 Concept B visually breaks up space with new paving
 Concept C value engineered to utilize existing paving.



Land Planning

Florham Park

Florham Park, NJ

We shall never achieve harmony with land, any more than we shall achieve absolute justice or liberty for people. In these higher aspirations, the important thing is not to achieve but to strive.

- Aldo Leopold



Land Planning

Hamilton Farm

Winchester, MA



Nothing instills a greater sense of home and pride than a strong neighborhood signature. This goal is achieved by working with elected officials and developers, as well as the public, in order to address the needs of a project.



Land Planning

Mountain Manor

Smithfield Township, PA

Harmony with the land is like harmony with a friend. You cannot cherish his right hand and chop off his left. The land is one organism.

- Aldo Leopold



We are what our environment makes us, and if our environment is such as to produce excellent health, beauty, joy, and comfort, it will reflect immediately in our lives.

- Rudolph Schindler